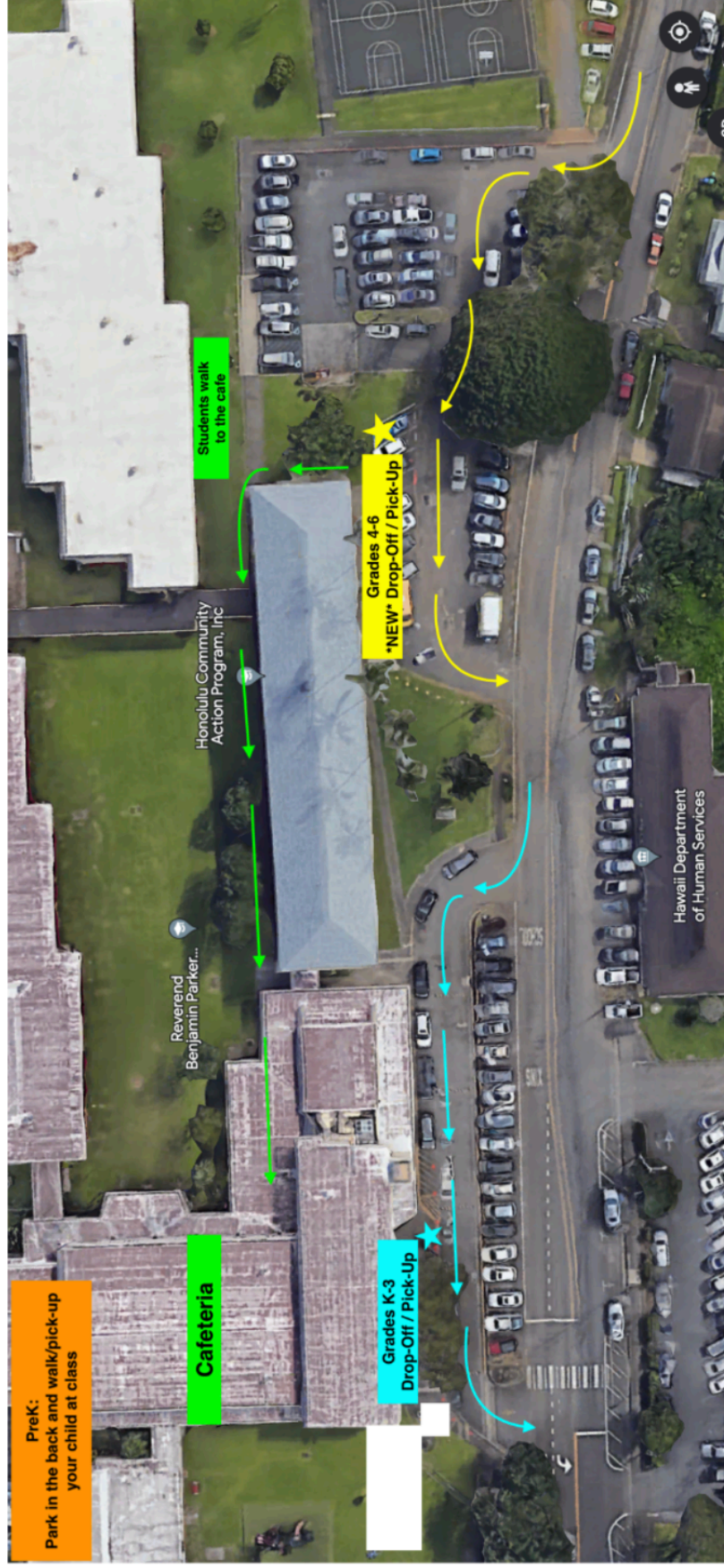


Updated 7/26/23



Updated information:

- PreK parents will need to park behind A-building and drop-off/pick-up their child at class
- Grades K-3 will continue with the same drop-off/pick-up location as last school year
- Drop-off/pick-up for Grades 4-6 is behind H-building. Students will walk to the café for morning supervision

Please remember:

- DO NOT drop off students before 7:15 am as there is no supervision
- Breakfast is served from 7:15 am – 7:45 am
- Student day begins at 7:50 am. Students will be marked tardy after 7:55 am